



A Sustainable Packaging Solution
for The North American Market

REVOLUTIONARY QT DRUMS



core
PLASTECH INTERNATIONAL INC

Core Plastech a fully owned subsidiary of Time Technoplast Ltd. Is setting up multiple manufacturing facilities in US to cater to the packaging requirements of the Chemical Industry, AG Chemical Industry, Food and other intermediate product categories.

Core Plastech offers 55 gal US Tight Head drums, Open Head drums, and IBCs in different capacities. Specialised packaging like Barrier drum, Anti-Static drum, Dip tube dispensing system shall also be available.

TIME
TIME TECHNOPLAST LTD.

Time is a multinational innovative polymer product Company with manufacturing facilities in over 10 countries.

Company caters to business segments such as Industrial Packaging, Composite Products Solutions, Materials Handling, Infrastructure and Automotive products.

Time Industrial Packaging Division caters to the packaging requirements of the leading and reputed names in the Chemical and Allied Industries with its offering, including IBC Totes, PE Drums Tight Head and Open Top, Jerrycans and Plastic Pails / Buckets.

countries it operates, the company operations delight customers with excellent product quality and service.

Company has huge experience, dealing with challenging packaging requirements across different user industries such as Textile Auxiliaries, Dyes & Dye Intermediates, Construction Chemicals, Speciality Chemicals, Agricultural Chemicals, Food Intermediates, Electronic Chemicals, & so on.

Company expands its presence in the US through **core** and has ambitious plans to set up multiple manufacturing facilities in a very short period.

With the modern production facilities and stringent quality control systems implemented across various units in the 10



QUALITY CONTROL AND CERTIFICATIONS

Elaborate testing facilities are provided at every production facility in-house to ensure stringent testing of manufactured products both on-line and off-line. Products manufactured comply with UN Certification requirements. Different testing and statutory authorities have audited and tested Time Products and have accorded their approval across the different regions.





 **THINK GREEN**

QT DRUMS - SUSTAINABLE SOLUTION

- ⊙ New and Revolutionary design makes the QT drums very interesting. The round drum has polygonal sides for exceptional performance and stack strength.
- ⊙ Use less plastic, no compromise in strength.
- ⊙ Optimisation of design and production process / techniques.
- ⊙ Better adaptation for optimisation fit and logistics advantages.



TIGHT HEAD DRUM



55 Gal/66 Gal
Tight Head Drums

FEATURES

TIGHT HEAD DRUM WITH FOOT RING

Polygonal profile for better stiffness.
Better stack ability.

EASY GRIP AND BETTER HANDLING

Flat top with extended handling.

EXCELLENT DROP IMPACT AND STACKING STRENGTH

ACCESSORY OPTIONS

Compatible tamper evident seal
cap available.
Venting arrangement available.

RECONDITIONER FRIENDLY

Post use it can be cleaned
and reconditioned.

MULTIPLE OPENING OPTIONS

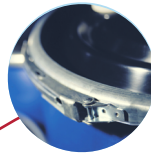
2" Buttress, 2" NPS



OPEN HEAD DRUM

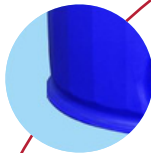
STRAIGHT WALL DRUM WITH FLUSHED CLAMPING RING

Better performance during handling.
Better utilization of warehousing space & truck trailer floor space.



FOOT RING IN-BUILT

Easier floor movement,
rolling / shifting.



LID WITH INBUILT CLOSERS

Protected / Secure design
& top flushed.

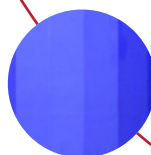


MULTIPLE OPENING OPTIONS

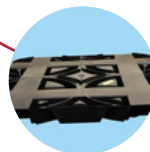
Plain lid or 2"
opening option.



POLYGONAL PROFILE FOR BETTER STIFFNESS



MECHANIZED HANDLING COMPATIBILITY



FEATURES

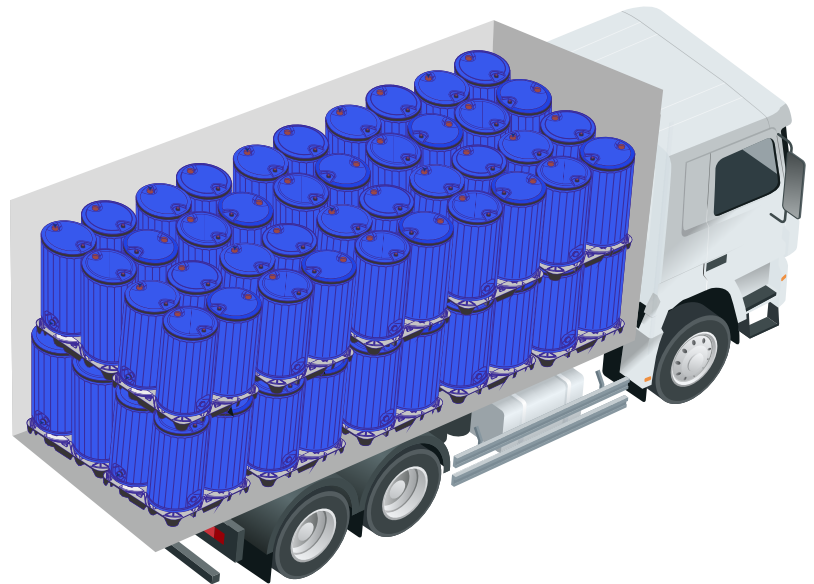


57 Gal/66 Gal
Open Head Drums

THINK OUT OF BOX

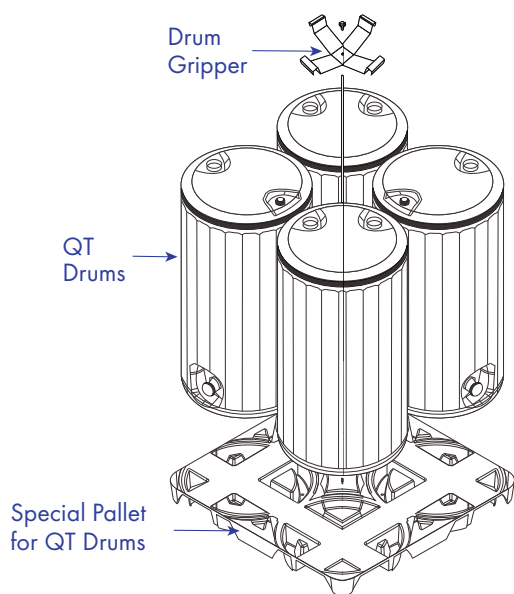
FOR YOUR BOXED SHIPMENTS

- ⊙ Why ship less, when you pay for the entire box?
- ⊙ Use 66 Gal QT drum to use full box capacity.
- ⊙ Save on your freight cost, port and logistic costs.



SHIP MORE. SAVE MORE.

66 Gallon Drums - Discharge Conveniently



Option 1 :
Use drum Gripper to
form a palletized unit

- ⊙ Easy to stuff, Easy to de-stuff
- ⊙ Straight wall,
Good stack performance
- ⊙ Standard Opening
- ⊙ Pilfer evident seal caps
- ⊙ UN Approved*



Option 2 :
Strap to form
a palletized unit



1ST TIME GLOBALLY, DRUMS WITH DISCHARGE VALVE

- ⊙ For the 1st time, PE drums are offered with built-in Discharge valve.(optional)
- ⊙ Material discharge made most convenient.
- ⊙ Bottom discharge valve can be used to empty / discharge most of the contents. Use standard top openings to take last drops out.
- ⊙ Discharge valve made very compact, flushes with drum
- ⊙ Easier handling, special handle grip, for easy opening / closing.
- ⊙ Can be pilfer evident sealed.



REVOLUTIONARY DESIGN

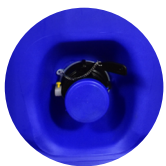
Bottom discharge valve for easy emptying



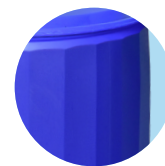
Polygonal design
for better strength.



Extended bottom XL ring
for edge rolling.



2" Bottom discharge
valve available.



Grip area for easy
handling.

Technical Specifications



Tight Head 55 Gallon & Open Head 57 Gallon

PE Drum	Tight Head 55 Gallon	Open Head 57 Gallon
Total Height	36"	36 3/4"
Outer Diameter	23"	23"
Mouth Opening	2" NPS & 2" Buttress	21"
Tare Weight	21 Lbs (9.5 kgs)	23 Lbs (10 kgs)
Lid Option	NA	Plain Lid or with 2 openings (2" NPS, 2" Buttress)



Tight Head & Open Head 66 Gallon

PE Drum	Tight Head 66 Gallon	Open Head 66 Gallon
Total Height	41"	42"
Outer Diameter	23"	23"
Mouth Opening	2" NPS & 2" Buttress	21"
Tare Weight	22 Lbs (9.8 kgs)	23.5 Lbs (10.6 kgs)
Lid Option	NA	Plain Lid or with 2 openings (2" NPS, 2" Buttress)

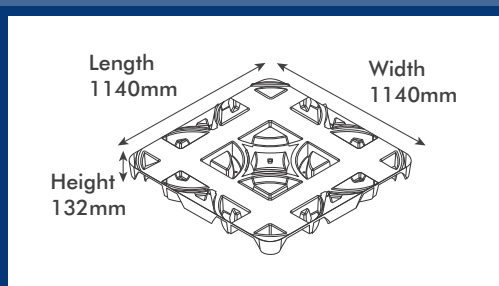


Optional Discharge Valve

Discharge Valve Specifications

Material	PE
Discharge Valve	DN50 butterfly valve with 2" buttress thread 2" Quick Discharge (QD) Coupler available
Gasket	EPDM / VITON
Sealing	Pilfer evident sealing

Drum with discharge valve option can be made available.



QT Pallet

Pallet	Measurements
Length	45" (1140 mm)
Width	45" (1140 mm)
Height	5" (132 mm)
Weight	19 Lbs (8.6 kgs)
Pallet	Injection moulded PE Black colour with drum locators. The pallet is designed in such a way to secure the base of the drum & for even load distribution during the stacking. Non rackable pallet.